

FALL 2020

LEARNING BY DESIGN

THE PREMIER SOURCE FOR EDUCATION DESIGN INNOVATION AND EXCELLENCE

Awards of Excellence



EARLY CHILDHOOD SCHOOL/ELEMENTARY SCHOOL | **NEW**
CONSTRUCTION/ADDITION | ENTIRE SCHOOL/CAMPUS BUILDING

Mary Lyon Elementary School

Tacoma, WA

IBI Group

801 Second Avenue, Suite 1000
Seattle, WA 98104
<https://ibigroup-edpnw.com/>
Ross Parker, AIA, ALEP, LEED AP, Associate Principal,
Seattle Education Practice Lead
206/518-5910

DESIGN TEAM

Erickson McGovern Architects, Associate Architects
Ross Parker, Principal-in-Charge, Project Manager
Jeremy Theodore, Design Principal
Thomas Cohen, Staff Architect

OWNER/CLIENT

Tacoma Public Schools
Tacoma, WA
Kristine Anderson, Capital Projects Supervisor

KEY STATS

Grades Served: PreK-5
Capacity of Students/Occupants: 450
Size of Site: 3.02 acres
Gross Area of Bldg./Space: 56,625 gsf
Space per Student: 126 sq. ft.
Cost per Student: \$54,222
Square Foot Cost: \$430
Project Cost: \$24,400,000
Occupation Date: 6/17/2019

PHOTOGRAPHY: @2019 IBI GROUP; @2019 LARA SWIMMER
PHOTOGRAPHY



@2020 Lara Swimmer Photography

The new Mary Lyon serves an historically underserved residential community in the USA's Pacific Northwest. The inspiring facility evokes the values and spirit of the diverse educators, students, and parents who were integral to the year-long planning and design process.

The unique needs of this school's educational environment include loop teaching—where teachers stay with their student cohort over several years—and a focus on language learners, the disadvantaged, and autism students.

Prioritizing student outdoor spaces dictated a streetfront presence and three-story configuration. The glazed corner entry and canopy welcome all into the heart of the school—a dramatic library atrium surrounded by shared community spaces, learning neighborhoods, special programs, and learning support spaces that ensure equitable access. Corridors are minimized and circulation space incorporated into learning spaces. Flexible connections and transparency support Next Generation learning, safety, and promote a sense of community and pride while embracing both



@2020 IBI Group;



@2020 Lara Swimmer Photography

day-to-day and long-term change.

Brain research into how young brains learn informed the design through an understanding of the learning styles and activities that create deeper learning. Classrooms are organized into learning neighborhoods organized around open flexible spaces for student projects, scientific inquiry, art, or larger group gathering and presentations.

Folding glass partitions offer flexible interconnectivity for classrooms and project spaces. Structure and services are organized to allow for easier future renovation. Classroom technology is portable; the front of the teaching space is wherever the video presentation station is. Wireless connections connect all laptops and tablets.

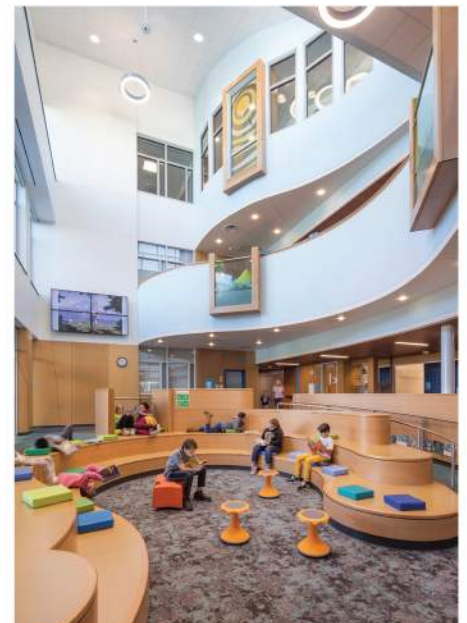
Ensuing safety was paramount: visibility throughout; automatically closing doors secure students from public spaces for sheltering in place or discreet evacuation; and screened outdoor play areas are enclosed to corral special needs students who may run uncontrollably.



@2020 Lara Swimmer Photography

Architectural tectonics provide environmental connections, learning tools, and inspiration to travel and explore—many students have never visited the nearby Puget Sound. Each floor reflects different habitats: water, forest, sky. Winding “watercourse” floor patterns connect interactive water features, recessed “tidal pool” seating in the library, learning neighborhoods, and outdoor play areas. Clouds are evoked by curving ceiling elements, forests by natural and tactile materials, flora and fauna by natural accent colors and graphics, and sustainable features by environmental graphics.

Differentiated scale and personalization is provided with flexible furniture, built-in seating nooks, and window seats. Wall and digital displays celebrate student work and expression of culture and pride. Vibrant accent colors celebrate dynamic cultures and individual classrooms.



@2020 Lara Swimmer Photography



@2020 Lara Swimmer Photography